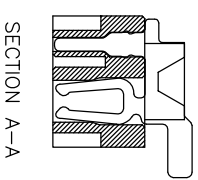
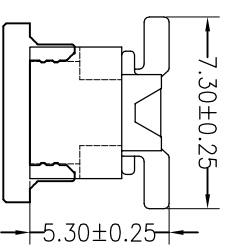
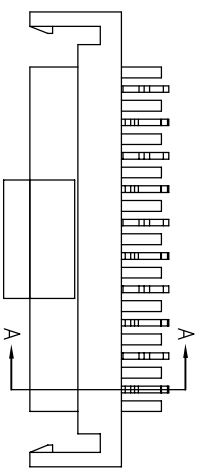
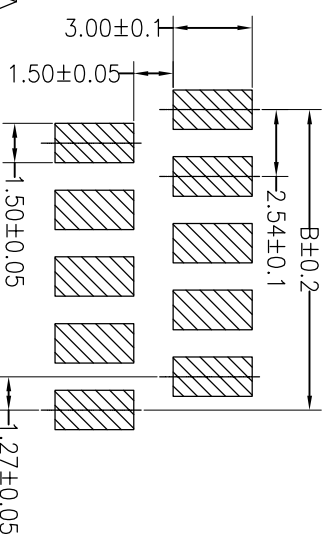
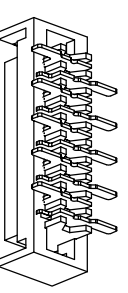
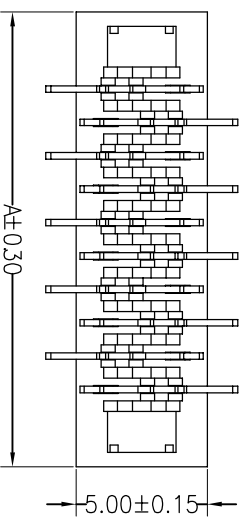


HSE RoHS

SPECIFICATIONS

Rated Current: 1.0AMP
 Contact Resistance: 20mΩ Max
 Withstand Voltage: 500V AC/DC
 Insulation Resistance: 1000MΩ Min
 Operation Temperature: -40°C to +105°C
 Contact Material: Phosphor Bronze
 Contact Plating: Sn Over Ni
 Insulator Material: Polyester (UL94V-0)
 Standard: PA46
 Max. Processing Temp: 230°C for 30-60 seconds
 (260°C for 10 seconds)

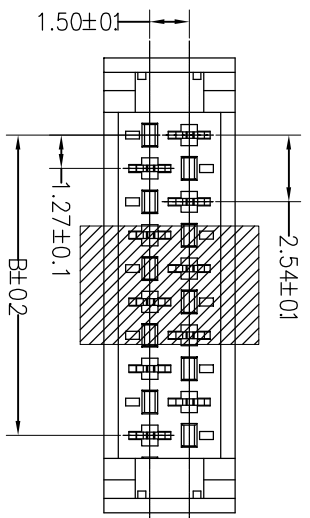


PINS	A	B
4	9.68	3.81
6	12.23	6.35
8	14.77	8.89
10	17.31	11.43
12	19.85	13.97
14	22.39	16.51
16	24.93	19.05
18	27.47	21.59
20	30.01	24.13
22	32.55	26.67
24	35.09	29.21
26	37.63	31.75

Ordering Information

4000 XX F M SN X W R 01

No. of Pins: 04~26P
 Contact Plating: SO:Gold Flash/Tm
 SN:Tm
 Insulator Material: A=BK-PBT, D=BK-PA46
 Packing: T=Tube, R=Reel, M=Reel+Mylar, R=Reel+Cap



OPERATION	SCALE	FIT
X.X	±0.30	mm
X.XX	±0.20	A4
X.XXX	±0.10	1/1

REV	DATE	MODIFICATION DESCRIPTION	CHANGE	DIM	TOL	APPROVE	PROU.	TITLE:
A0	2018.11.24	NEW DRAWING		Angle	±3°			PART NO.: 4000XXFMSNXWR01
1								Micro Match FEMALE-SMT TYPE

JILIN 深圳市锦凌电子有限公司
 SHENZHEN JINLING ELECTRONIC CO.,LTD

Tel: 86-755-2997-5806/5802 Fax: 86-755-2997-5892

Recommended P.C.B Layout(Top Side)
 (PCB BOARD TOLERANCE±0.05)